

National Psychiatric In-Patient Reporting System (NPIRS)

HSE South Bulletin 2007

December 2008

As part of our national reporting role in relation to mental health service activity, the Mental Health Research Unit (MHRU) of the Health Research Board (HRB) presents data from the National Psychiatric In-Patient Reporting System (NPIRS) for HSE South for 2007. The MHRU would like to thank services for providing quarterly returns – your cooperation has resulted in timelier reporting. We look forward to your continued support in the future.

Rosalyn Moran
Head of MHRU

Introduction

This bulletin is a synopsis of data for HSE South from the NPIRS for 2007 and that reported in *Activities of Irish Psychiatric Units and Hospitals 2007* (Daly *et al.* 2007). The *Activities* report presents information on all and first admissions nationally, regionally (by HSE area) and locally, by individual service, by county and by hospital type.

The rates reported below were calculated using the Census of Population 2006 (Central Statistics Office, 2007) and all rates are per 100,000 total population. Rates were not available for socio-economic groups for each of the HSE areas.

There are differences in data reported in this bulletin and data reported by the Mental Health Commission (2008) due to differences in data coverage and different methods of assigning records to a HSE area. In addition, the HRB does not record Admission Orders to detain Voluntary Patients and thus there are differences in legal status. Please consult *Activities of Irish Psychiatric Units and Hospitals 2007* for further clarification.

All and first admissions 2007 – HSE South

There were 5,636 admissions for HSE South in 2007, a rate of 520.9 per 100,000 (Figure 1). This was the highest rate of all admissions among all HSE areas. There were 1,685 first admissions, a rate of 155.7 per 100,000, the highest rate among all HSE areas. Re-admissions (3,951) accounted for 70% of all admissions, representing a rate of 365.2 per 100,000.

Gender and age

Males accounted for 52% of all admissions, a rate of 535.3, the highest rate for males among all HSE areas and higher than the national male rate (488.4). Similarly, the rate of first admissions for males in HSE South (171.8) was the highest for males among all HSE areas.

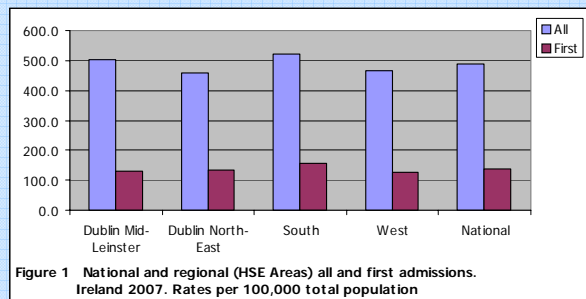


Figure 1 National and regional (HSE Areas) all and first admissions. Ireland 2007. Rates per 100,000 total population

The 35–44-year age group had the highest rate of all admissions in HSE South, at 782.0 per 100,000. The 45–54-year age group had the second-highest rate, at 755.8, followed by the 25–34-year age group, at 733.3. The under 18-year age group had the lowest rate of admission, at 26.9, the highest rate for this age group among all HSE areas.

The 20–24-year age group had the highest rate of first admissions in HSE South, at 259.2, followed by the 18–19-year age group, at 251.8, and the 25–34-year age group, at 225.2. The under 18-year age group had the lowest rate of first admissions, at 15.7.

Age groups were condensed into two groups: under 45 years and 45 years and over. The 45 year and over age group had the highest rate of admission in all HSE areas, with rates ranging from 744.8 per 100,000 in Dublin Mid-Leinster to 589.3 in HSE West (Figure 2). The rate of admission for the 45 year and over age group in HSE South was 641.3, while that for the under 45 year age group was 456.9.

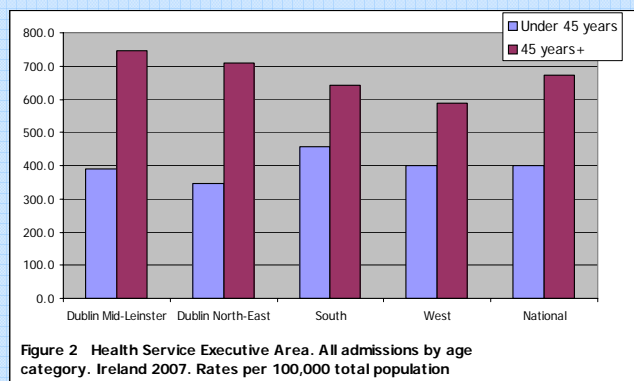


Figure 2 Health Service Executive Area. All admissions by age category. Ireland 2007. Rates per 100,000 total population

Marital status

Single persons accounted for 59% of all admissions and 56% of first admissions; married persons accounted for 24% of all and 28% of first admissions; widowed persons accounted for 5% of all and 5% of first admissions; and divorced persons accounted for 2% of all and 2% of first admissions.

Divorced persons had the highest rate of all admissions, at 705.0, and first admissions, at 226.4. Married persons had the lowest rate of all admissions (327.2) and first admissions (115.0).

Socio-economic group

Twelve per cent of all admissions had non-manual occupations, 10% were manual skilled, 8% were unskilled and 8% were semi-skilled. However, it is worth noting that 46% of returns for HSE South did not specify an occupation, making assignment to a socio-economic group impossible.

Diagnosis

Depressive disorders accounted for 31% of all admissions and 34% of first admissions for HSE South; schizophrenia accounted for 19% of all and 12% of first admissions; and alcoholic disorders accounted for 11% of all and 12% of first admissions.

All and first admission rates in HSE South were highest for depressive disorders, at 163.2 and 53.3 per 100,000, respectively (Figure 3). These rates were the highest for depressive disorders among all HSE areas. Schizophrenia had the second-highest rate of all admissions in HSE South, at 98.8, followed by alcoholic disorders, at 59.5. Alcoholic disorders had the second-highest rate of first admissions in HSE South, at 19.2, followed by schizophrenia, at 18.2.

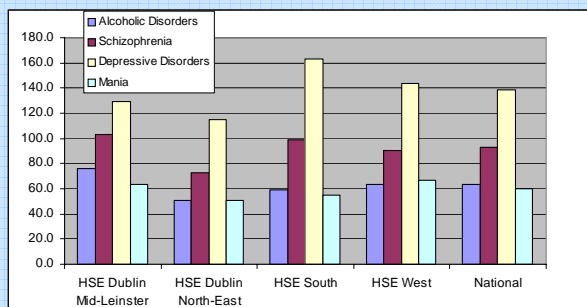


Figure 3 National and regional (HSE Areas) admissions for selected diagnostic groups. Ireland 2007. Rates per 100,000 total population

Legal status

Non-voluntary admissions accounted for 11% of all and 10% of first admissions. The proportion of non-voluntary all admissions was the highest among all HSE areas and was higher than the

national proportion of non-voluntary admissions, at 9%.

The rate of non-voluntary all admissions was 56.0, the highest among all HSE areas, while that for first admissions was 16.0 (Figure 4), also the highest among all HSE areas.

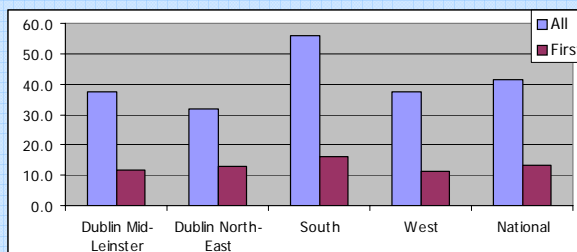


Figure 4 Health Service Executive Area. All and first non-voluntary admissions. Ireland 2007. Rates per 100,000 total population

Discharges (including deaths)

There were 5,588 discharges for HSE South in 2007.

Thirty per cent of discharges occurred within one week of admission, 19% occurred within one to two weeks and 20% occurred within two to four weeks of admission. Ninety-four per cent of discharges occurred within three months of admission. This is similar to the pattern observed nationally.

Discharges for HSE South accounted for 27% of all discharges nationally and 28% of in-patient days. The average length of stay was 26.1 days (median 13 days).

References

Central Statistics Office (2007) *Census 2006. Volume 1 – Population Classified by Area*. Dublin: Stationery Office.

Daly A, Walsh D and Moran R (2007) *Activities of Irish Psychiatric Units and Hospitals 2007*. Dublin: Health Research Board.

Mental Health Commission (2008) *Annual Report including the Report of the Inspector of Mental Health Services 2007. Book One*. Dublin: Mental Health Commission.

Contact details for queries regarding this bulletin or the NPIRS:

Antoinette Daly

t +353 1 2345 142 or + 353 45 531246

e adaly@hrb.ie