

National Psychiatric In-Patient Reporting System (NPIRS) HSE Dublin North-East Bulletin 2007

December 2008

As part of our national reporting role in relation to mental health service activity, the Mental Health Research Unit (MHRU) of the Health Research Board (HRB) presents data from the National Psychiatric In-Patient Reporting System (NPIRS) for HSE Dublin North-East for 2007. The MHRU would like to thank services for providing quarterly returns – your cooperation has resulted in timelier reporting. We look forward to your continued support in the future.

Rosalyn Moran
Head of MHRU

Introduction

This bulletin is a synopsis of data for HSE Dublin North-East from the NPIRS for 2007 and that reported in *Activities of Irish Psychiatric Units and Hospitals 2007* (Daly *et al.* 2007). The *Activities* report presents information on all and first admissions nationally, regionally (by HSE area) and locally, by individual service, by county and by hospital type.

The rates reported below were calculated using the Census of Population 2006 (Central Statistics Office, 2007) and all rates are per 100,000 total population. Rates were not available for socio-economic groups for each of the HSE areas.

There are differences in data reported in this bulletin and data reported by the Mental Health Commission (2008) due to differences in data coverage and different methods of assigning records to a HSE area. In addition, the HRB does not record Admission Orders to detain Voluntary Patients and thus there are differences in legal status. Please consult *Activities of Irish Psychiatric Units and Hospitals 2007* for further clarification.

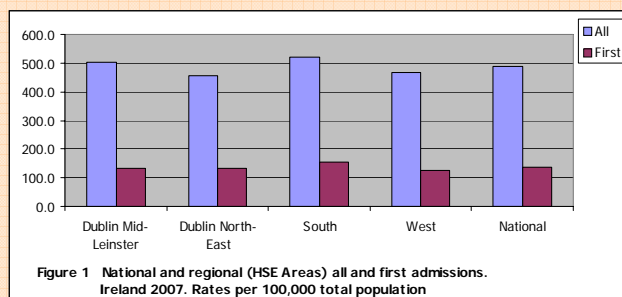
All and first admissions 2007 – HSE Dublin North-East

There were 4,226 admissions for HSE Dublin North-East in 2007, a rate of 456.8 per 100,000 (Figure 1). This was the lowest rate of all admissions among all HSE areas. There were 1,227 first admissions, a rate of 132.6 per 100,000. Re-admissions (2,999) accounted for 71% of all admissions, representing a rate of 324.2 per 100,000.

Gender and age

Females accounted for 53% of all admissions, a rate of 482.3. This was the second-lowest rate for females among all HSE areas, with Dublin Mid-Leinster having the highest, at 512.3. The rate of first admissions for females in Dublin North-East (134.6) was the second-

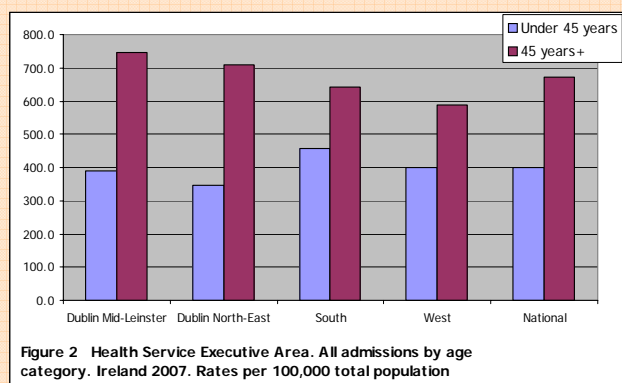
highest for females among all HSE areas.



The 45–54-year age group had the highest rate of all admissions in Dublin North-East, at 756.9 per 100,000, in keeping with the high national rate for this age group. The 55–64-year age group had the second-highest rate, at 753.5, followed by the 65–74-year age group, at 706.8. The under 18-year age group had the lowest rate of admission, at 14.7, the lowest rate for this age group among all HSE areas.

The 20–24-year age group had the highest rate of first admissions in Dublin North-East, at 184.0, followed by the 35–44-year age group, at 183.1, and the 45–54-year age group, at 176.0. The under 18-year age group had the lowest rate of first admission, at 12.0.

Age groups were condensed into two groups: under 45 years and 45 years and over. The 45 year and over age group had the highest rate of admission in all HSE areas, with rates ranging from 744.8 per 100,000 in Dublin Mid-Leinster to 589.3 in HSE West (Figure 2). The rate of admission for the 45 year and over age group (710.7) in Dublin North-East was twice that of the under 45 year age group (346.5).



Marital status

Single persons accounted for half of all admissions (51%) and half (50%) of first admissions; married persons accounted for 25% of all and 25% of first admissions; widowed persons accounted for 5% of all and 5% of first admissions; divorced persons accounted for 2% of all and 2% of first admissions. Divorced persons had the highest rate of all admissions (697.2) and first admissions (206.8), while married persons had the lowest rate of all (320.9) and first admissions (93.8).

Socio-economic group

Thirteen per cent of all admissions had non-manual occupations, 6% were manual skilled, 6% were semi-skilled and 5% each were lower professionals and were unskilled. However, it is worth noting that over half (57%) of returns for Dublin North-East did not specify an occupation, making assignment to a socio-economic group impossible.

Diagnosis

Depressive disorders accounted for 25% of all admissions and 25% of first admissions for Dublin North-East; schizophrenia accounted for 16% of all and 10% of first admissions; and alcoholic disorders accounted for 11% of all and 12% of first admissions.

All and first admission rates in Dublin North-East were highest for depressive disorders, at 114.8 and 33.7 per 100,000, respectively (Figure 3). Schizophrenia had the second-highest rate of all admissions in Dublin North-East, at 73.1, followed by mania, at 51.0. Alcoholic disorders had the second-highest rate of first admissions in Dublin North-East, at 15.2, followed by schizophrenia, at 13.4.

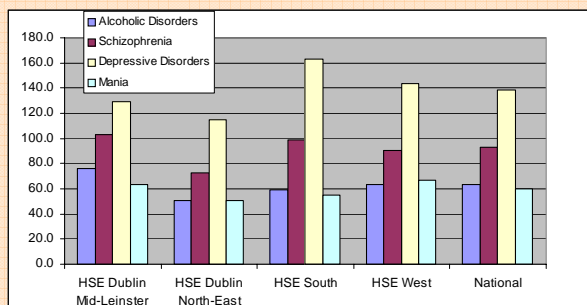


Figure 3 National and regional (HSE Areas) admissions for selected diagnostic groups. Ireland 2007. Rates per 100,000 total population

Legal status

Non-voluntary admissions accounted for 7% of all and 10% of first admissions. The rate of non-voluntary all admissions was 31.8, the lowest among all HSE areas, while that for first admissions was 13.1 (Figure 4).

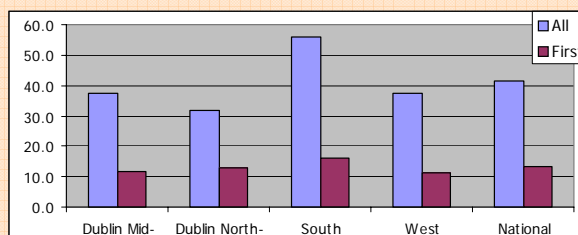


Figure 4 Health Service Executive Area. All and first non-voluntary admissions. Ireland 2007. Rates per 100,000 total population

Discharges (including deaths)

There were 4,220 discharges for HSE Dublin North-East in 2007.

Thirty-one per cent of discharges occurred within one week of admission, 18% occurred within one to two weeks and 20% occurred within two to four weeks of admission. Ninety-three per cent of discharges occurred within three months of admission. This is similar to the pattern observed nationally.

Discharges for Dublin North-East accounted for 20% of all discharges nationally and 20% of in-patient days. The average length of stay in Dublin North-East in 2007 was 25.4 days (median 13 days).

References

Central Statistics Office (2007) *Census 2006. Volume 1 – Population Classified by Area*. Dublin: Stationery Office.

Daly A, Walsh D and Moran R (2007) *Activities of Irish Psychiatric Units and Hospitals 2007*. Dublin: Health Research Board.

Mental Health Commission (2008) *Annual Report including the Report of the Inspector of Mental Health Services 2007. Book One*. Dublin: Mental Health Commission.

Contact details for queries regarding this bulletin or the NPIRS:

Antoinette Daly

t +353 1 2345 142 or + 353 45 531246

e adaly@hrb.ie